

MONTHLY MEMBERSHIP PROGRESS REPORT

District 4 C1

Results as of: 2/29/2024

GMT:

LOCATION CALIFORNIA

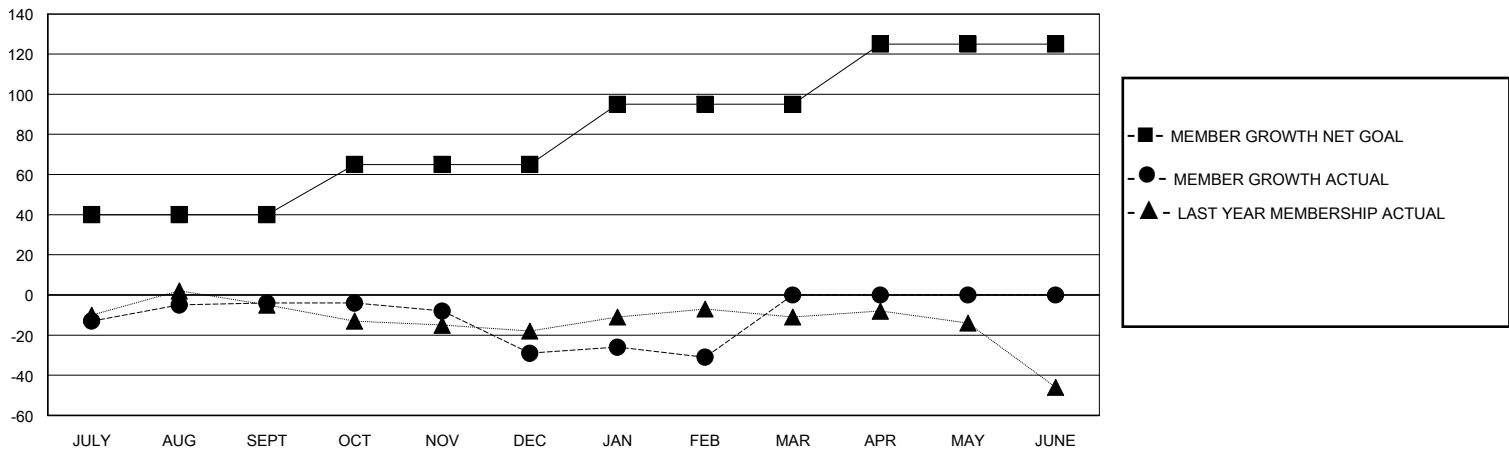
GMT CA

Clubs				Members			
RESULTS FOR 2023-2024				RESULTS FOR 2023-2024			
QUARTER	NEW CLUB GOAL	NEW CLUBS	DROPPED CLUBS	QUARTER	MEMBER GROWTH NET GOAL	MEMBER GROWTH ACTUAL	DROPPED MEMBERS ACTUAL (including transfers)
JULY/AUG/SEPT	0	0	0	JULY/AUG/SEPT	40	32	28
OCT/NOV/DEC	0	0	1	OCT/NOV/DEC	25	16	38
JAN/FEB/MAR	1	0	0	JAN/FEB/MAR	30	20	20
APR/MAY/JUNE	0	0	0	APR/MAY/JUNE	30	0	0

GOALS AND ACTUAL NEW CLUBS CUMULATIVE



GOALS AND ACTUAL MEMBERS CUMULATIVE



DROPPED CLUBS: 1	23 CLUBS OF 36 ADDED 1 OR MORE NEW MEMBERS	GENDER DISTRIBUTION MALE 533 (63.53%) FEMALE 306 (36.47%)
DROPPED MEMBERS DECEASED 6 CLUB CANCELLED 9 OTHER 71 TOTAL 86	CLICK HERE FOR CUMULATIVE MEMBERSHIP DATA	TOTAL FAMILY UNIT MEMBERS 166 FAMILY MEMBERS PAYING HALF DUES 86